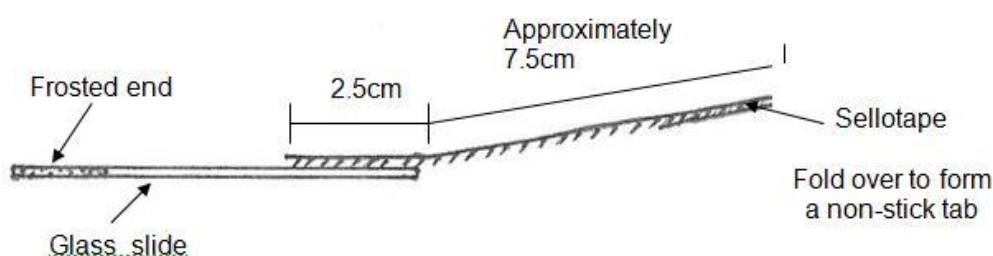


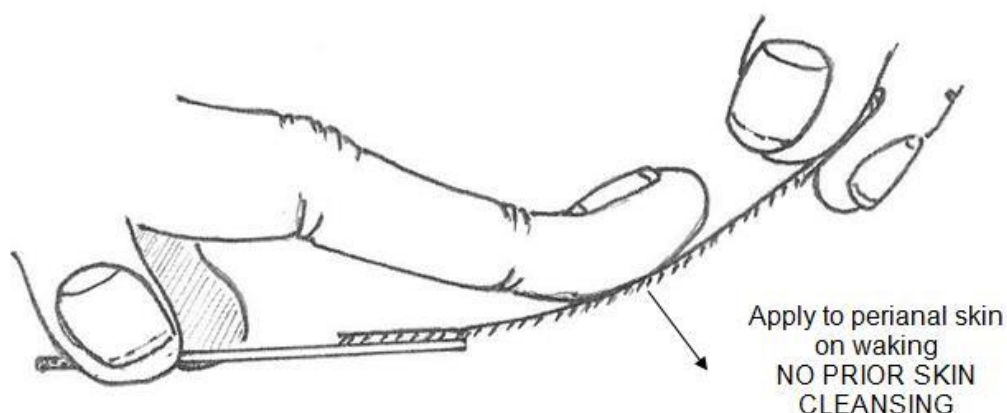
Instructions for taking sellotape anal impressions for threadworm (*Enterobius vermicularis*)

- Ideally the sample should be taken first thing in the morning.
- Label the slide with the patient's name.
- Place clear 'sellotape' over anus and small area of surrounding skin.
- Remove and stick tape onto glass slide provided.
- Send to the laboratory for analysis.

1



2



3

